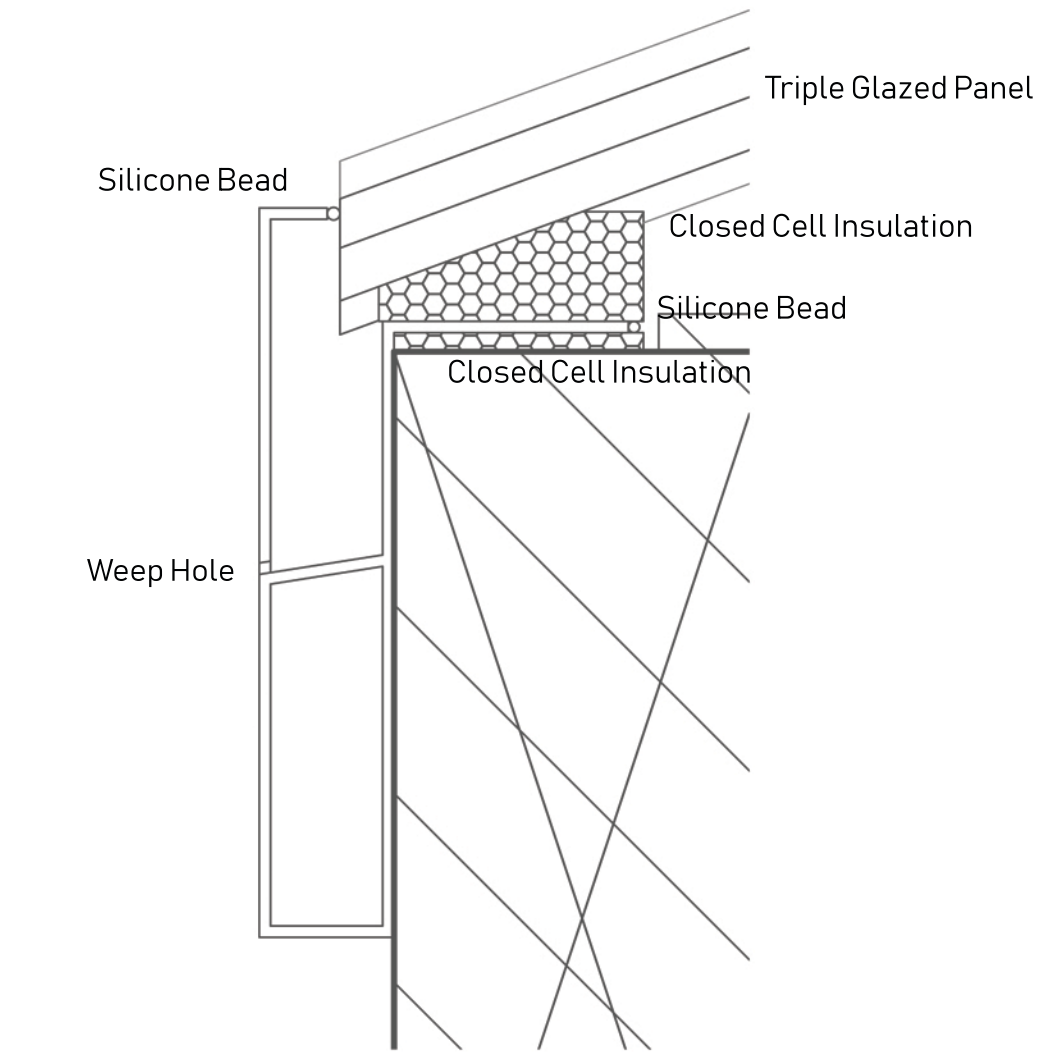
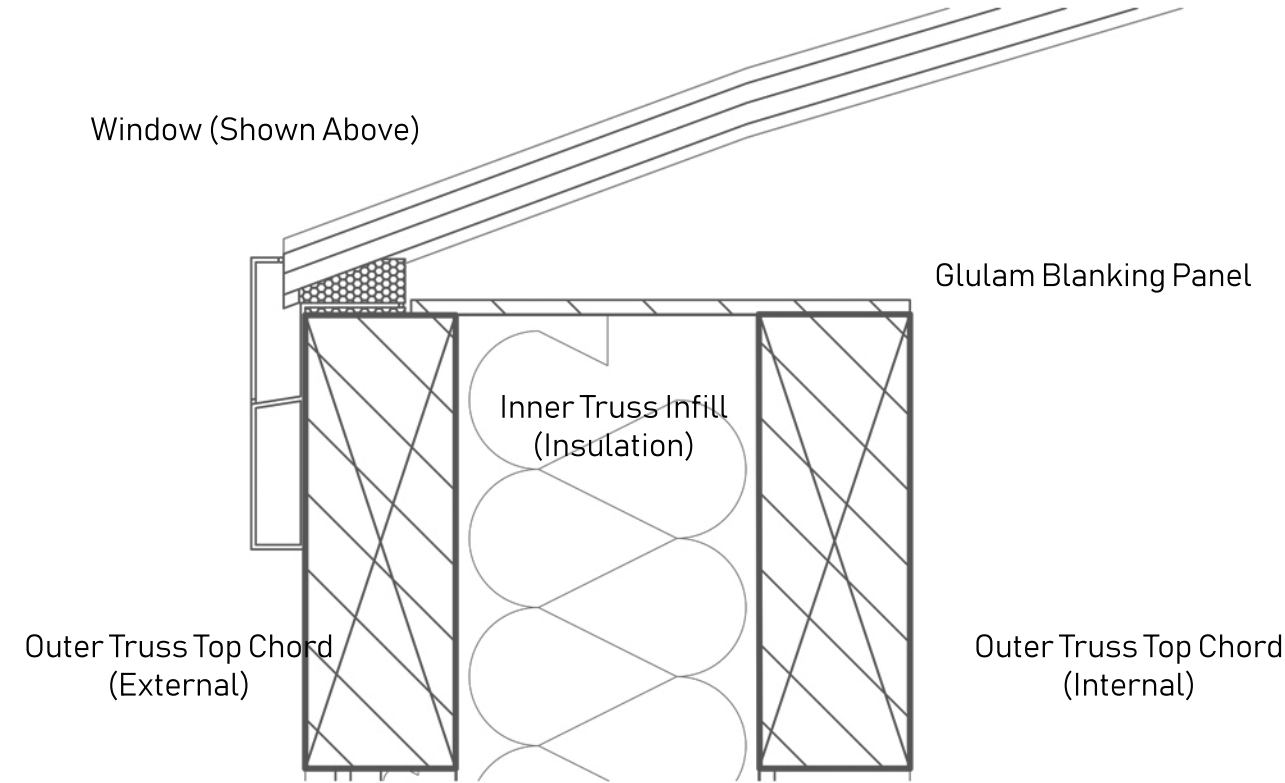


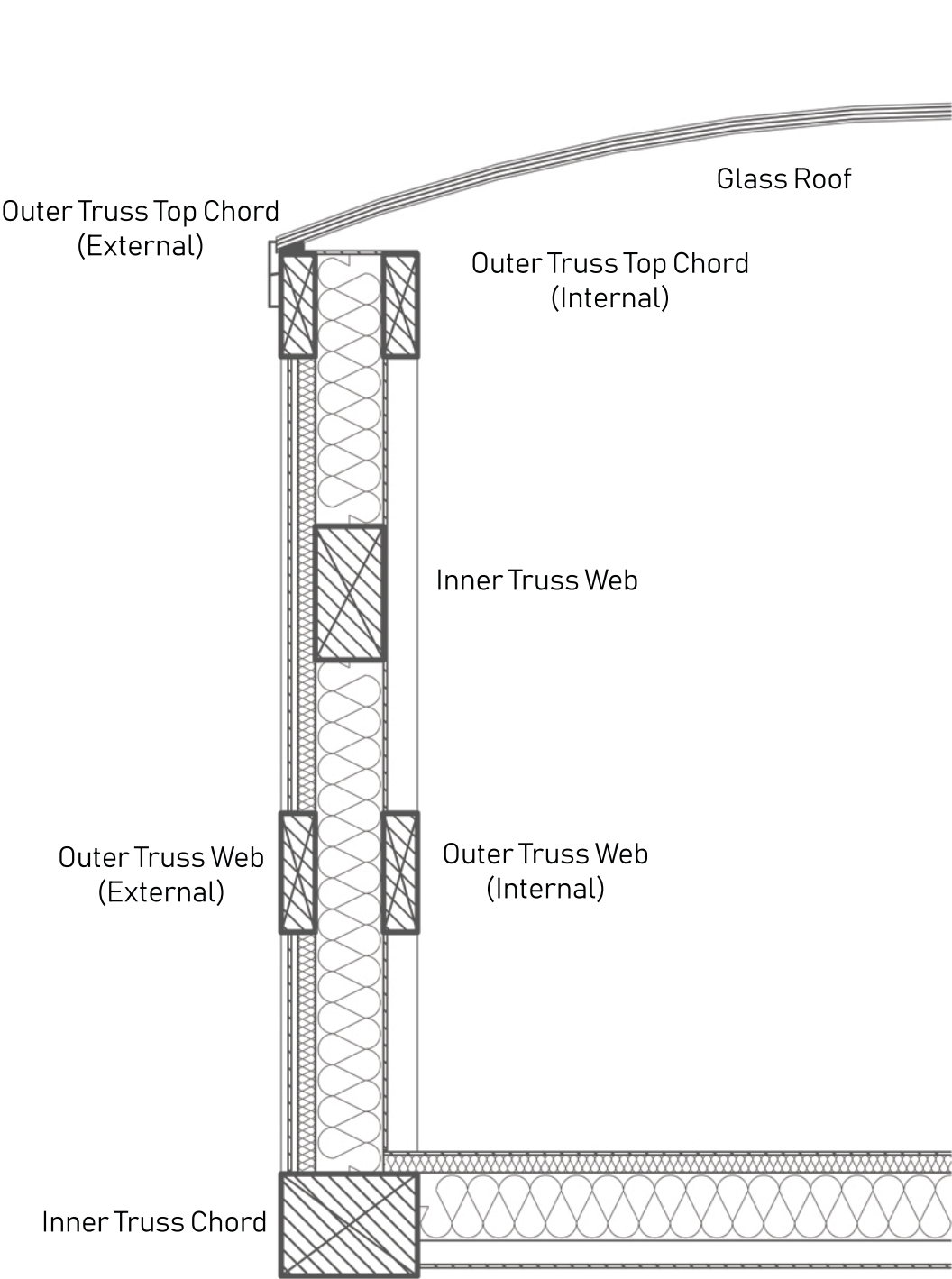
Window Detail- Non Opening Section 1:2 @A1



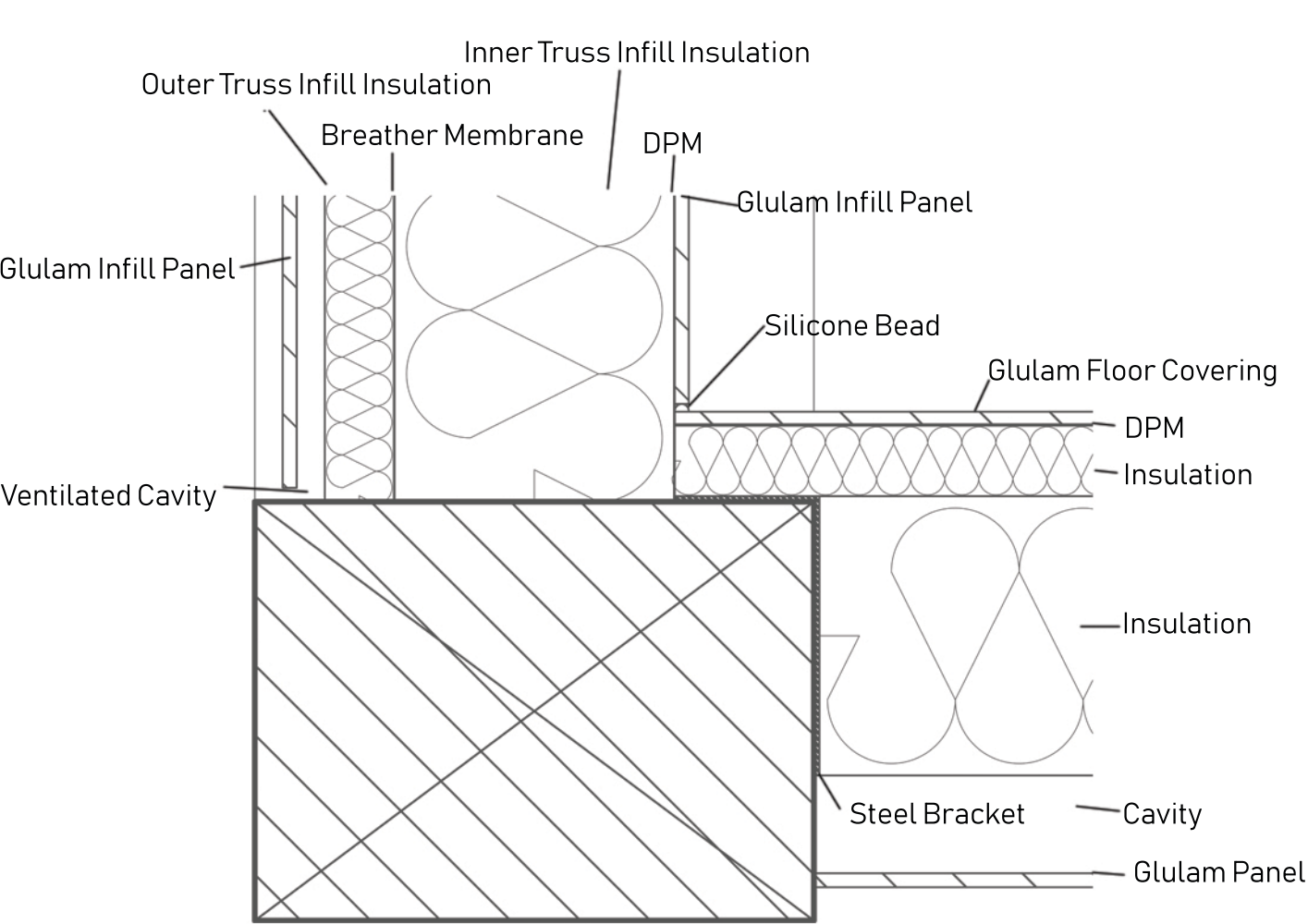
Top Chord Detail- Section 1:5 @A1



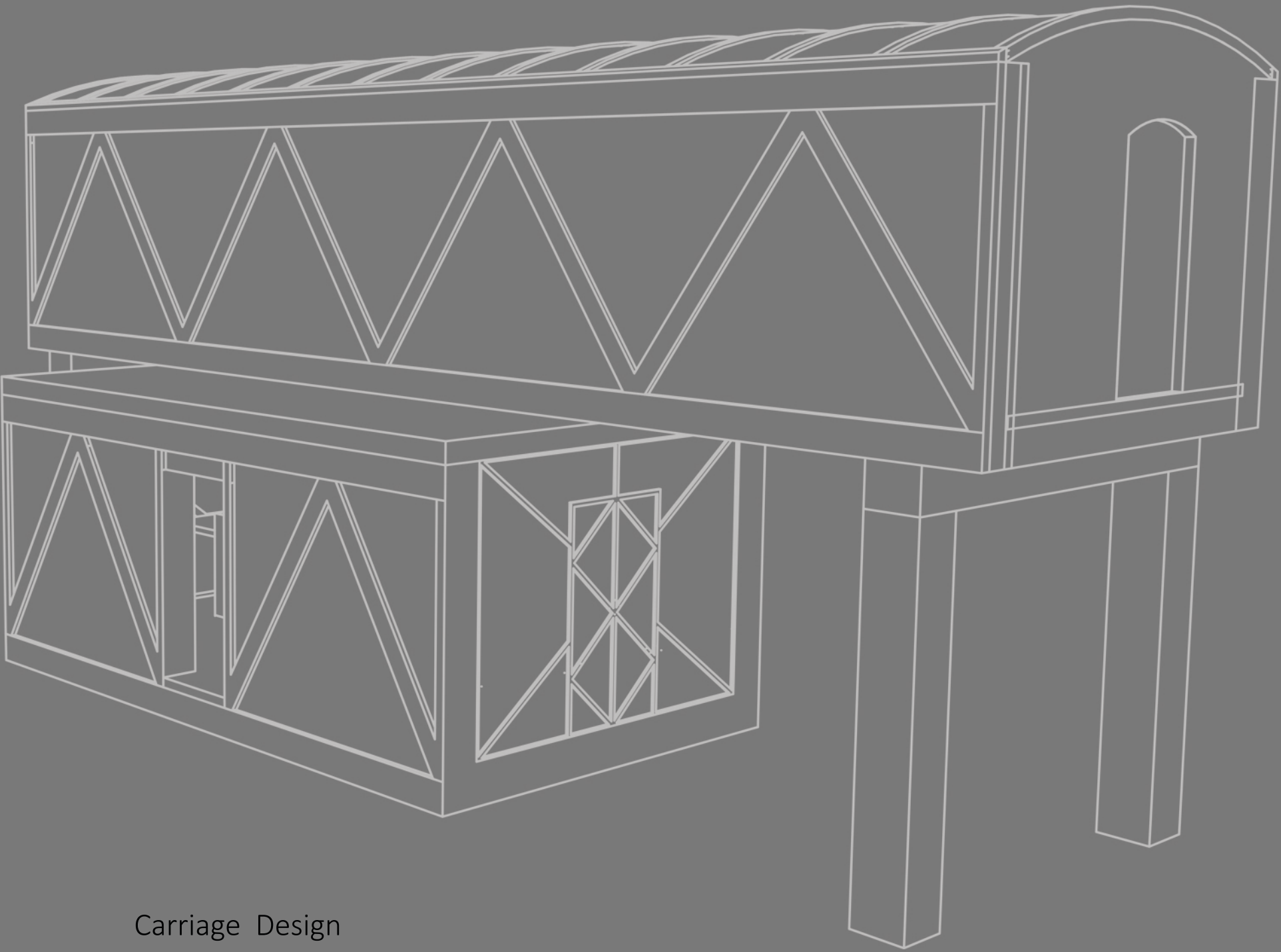
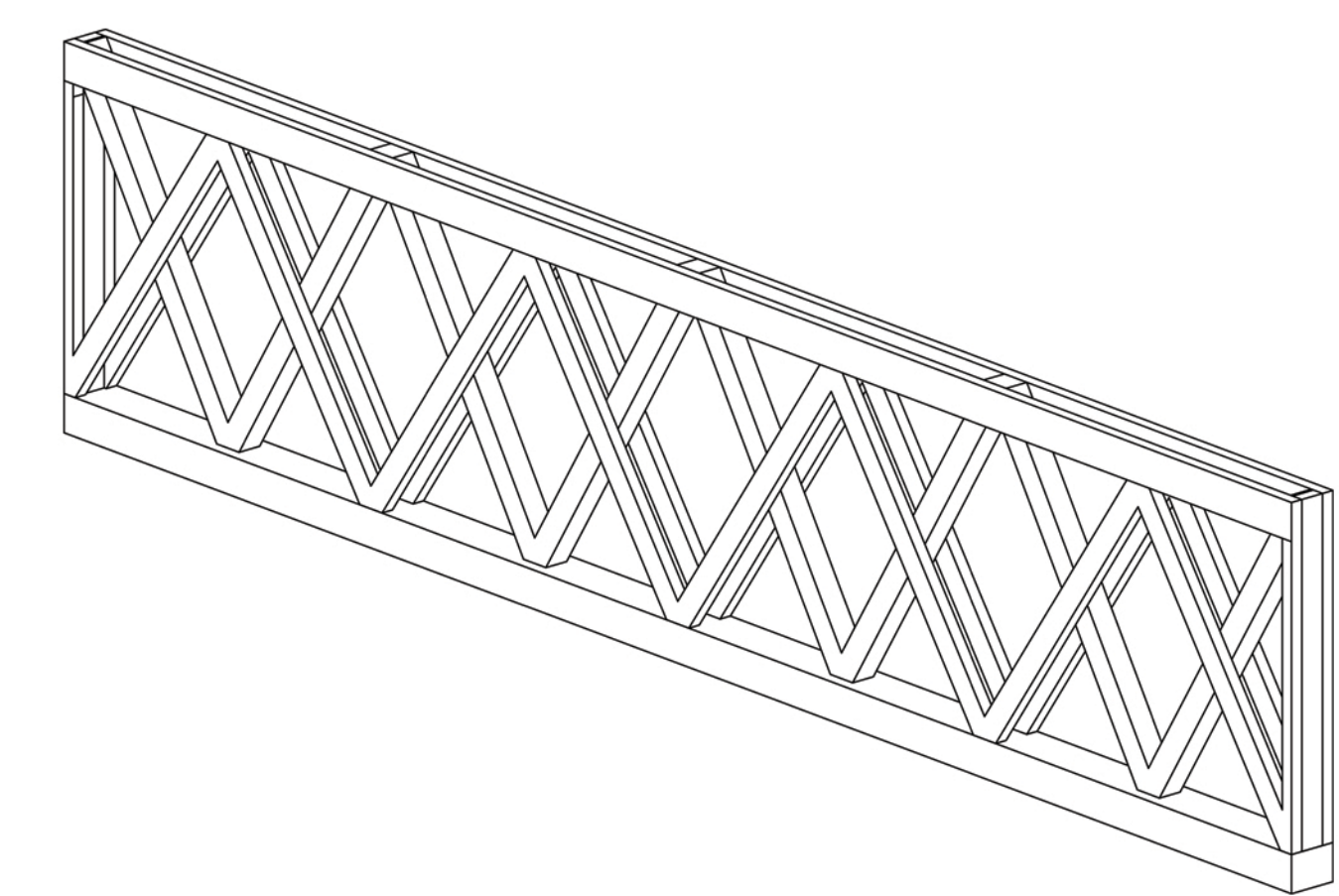
Carriage Detail- Section 1:20 @A1



Bottom Chord Detail- Section 1:5 @A1



Warren Truss Structure- Perspective

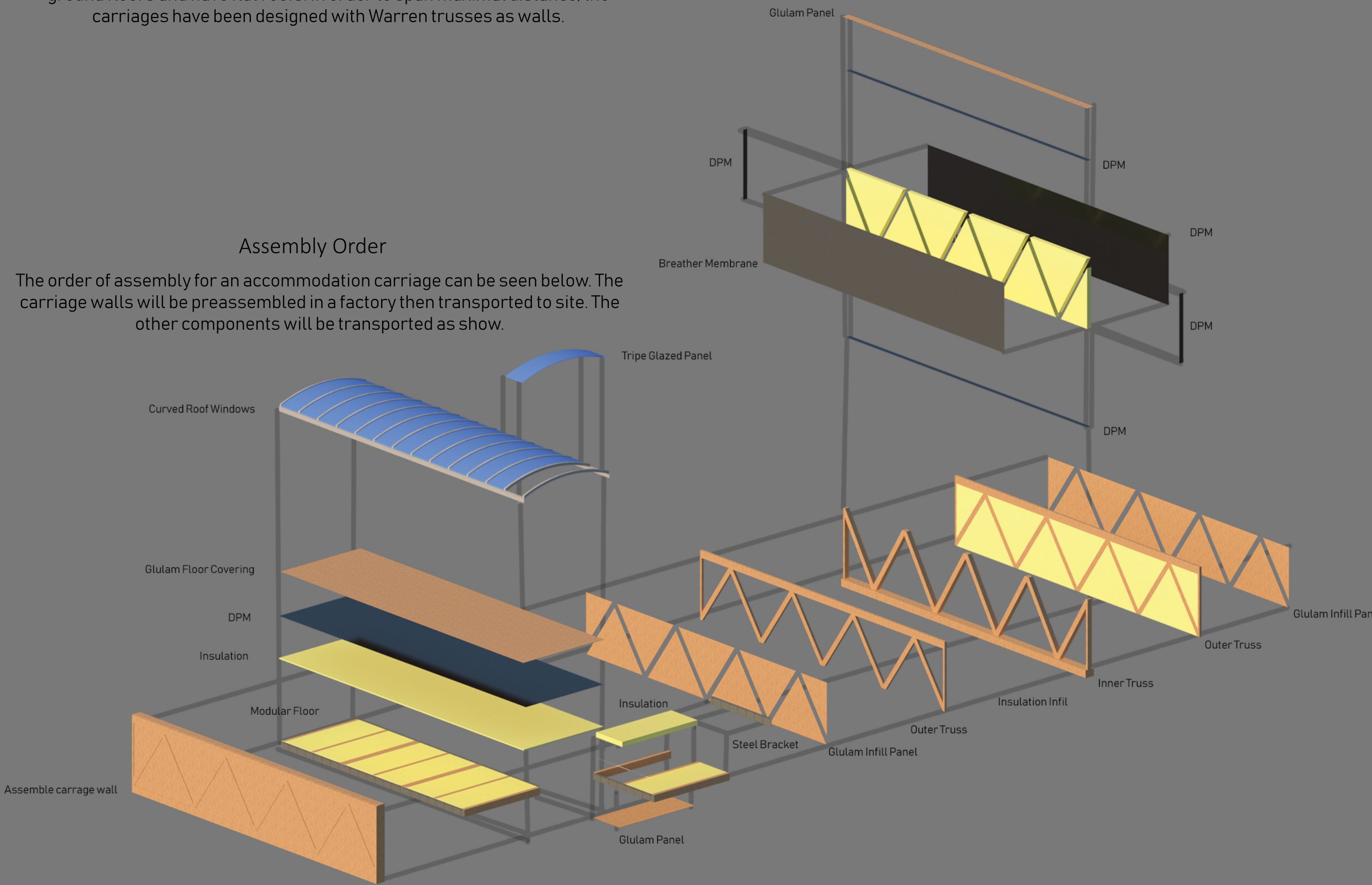


Carriage Design

The Carriages have been designed to be modular and transportable by HGV without wide/long load transport requirements. The accommodation carriages are on the first floor, and have curved roofs, the facility carriages are on the ground floors and have flat roofs. In order to span maximal distance, the carriages have been designed with Warren trusses as walls.

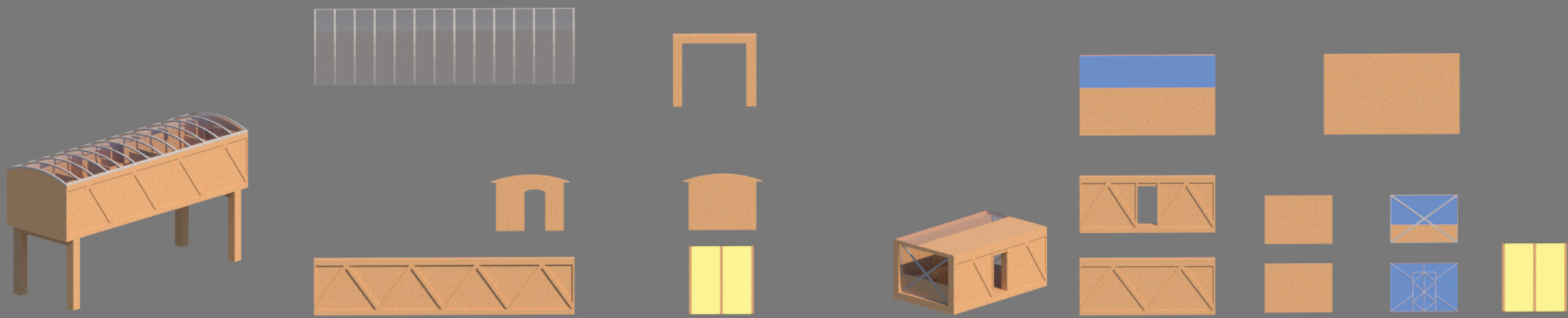
Assembly Order

The order of assembly for an accommodation carriage can be seen below. The carriage walls will be preassembled in a factory then transported to site. The other components will be transported as show.



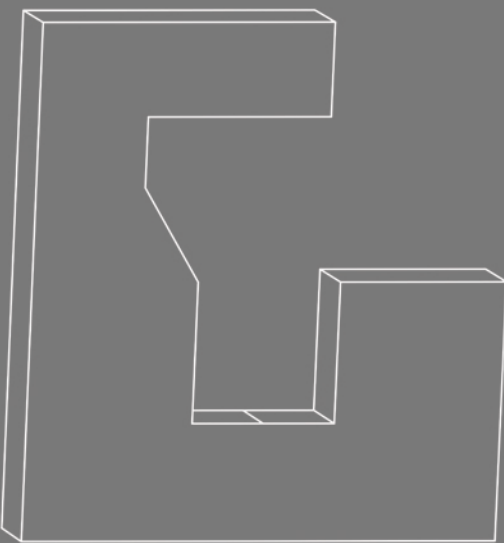
Modular Design

The components from which all the carriages are comprised are shown below, It takes only a small variety of components to assemble all of the different carriage derivations.

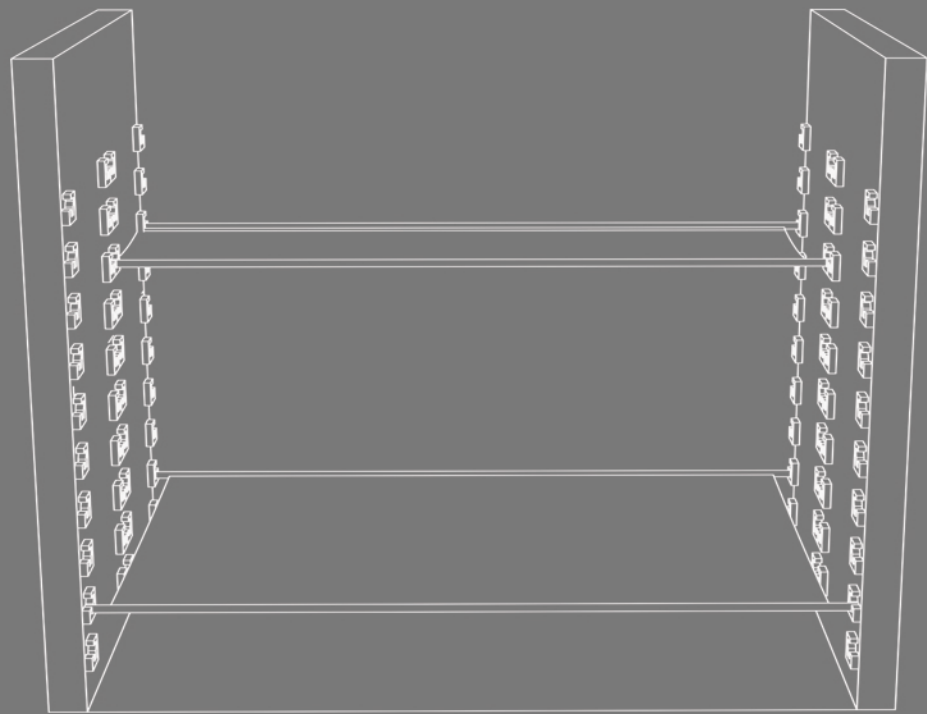


Carriage Interior Layout

The sleeping spaces are hired out as a space and can hold two or three people depending on size. The beds are a derivation of hammocks with two solid poles joined with an insulated sheet. This can be removed to allow for easy cleaning. The bracket to hold the hammock bars is show on the left. A three person sleeping bay is show on the right. The carriage floor plan is shown below.



Hammock Bracket- Perspective



3 Person Sleeping bay- Perspective

Carriage Internal Layout- Plan 1:50 @A1

